



Reco Cam-L100

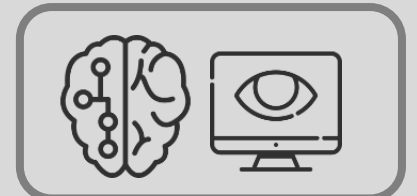
An industrial license plate recognition engine server with state-of-the-art deep learning technology, suitable for stop-and-go Toll Plaza

TECHNICAL SPECIFICATIONS

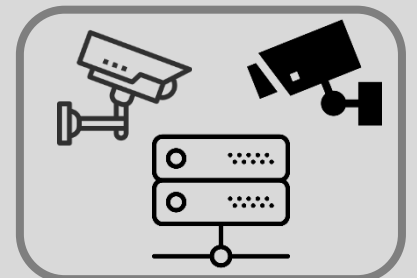
Wavelength	400K
Illumination Source	Latest High Power Led Technology LEDs
Lane Coverage	Single
IR Effective Range	10 to 20M
Speed Limit	60 ~ 150kph (Depend on installation method)
Image Sensor	CMOS
Effective Pixels	1920 x 1080
Optical Format	1 / 2.8"
Frame Rate	H.264: 1920 x 1080 @ 60fps H.264: 1280 x 720 @ 120fps H.264: 640 x 480 @ 30fps
Lens	25 /50 mm Lens (Optional)
Video Compression	H.264, MJPEG Streaming: Dual Codec (H.264 JPEG) Selectable Support Simultaneous multiple streams
Protocols	IPv4,TCP/IP,DHCP,HTTP,RTSP,SNTP,DNS
Image Settings	Adjustable image size, quality, and bit rate Time/Date stamp and text caption overlay. Configurable brightness, contrast, saturation, sharpness, white balance and exposure AGC / AWB / AES / BLC / WDR
Housing	190 mm x 240 mm x 115 mm (full metal casing)
Operating temperature	-20 ~ +60°C
Power Consumption	35W
Power Requirement	DC12 ~ 30V

FEATURES:

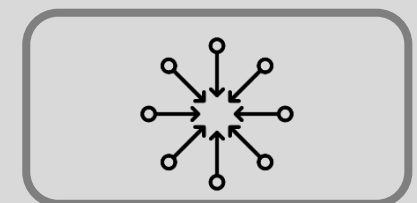
Deep Learning



Camera Agnostic Solution



Centralized Processing



Support max speed 120km/hour

