



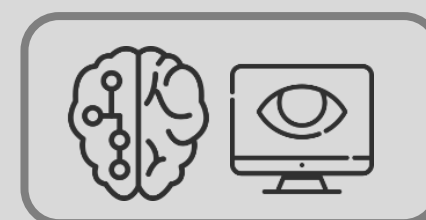
## RT-L100X

Top-of-the-line industrial-grade LPR engine server for critical application.

Software	
Image Resolution (Min)	1080p (1920 x 1080 pixels)
Camera View Range (Metre)	10 metre
License Plate Character size (Min)	50 pixels
Lighting Illumination Requirement (Min)	500 lux
Vision based Vehicle Detection	Yes
License Plate Recognition Results	Result record contains: <ul style="list-style-type: none"> <li>• Number plate string (optionally hashed)</li> <li>• Confidence level of recognition result</li> <li>• Vehicle speed</li> <li>• Time stamp</li> <li>• Country of origin (based on number plate syntax)</li> <li>• Vehicle class</li> </ul>
Compatible License Plate	Alphanumeric (ASCII) Format <ul style="list-style-type: none"> <li>• Malaysia</li> <li>• Philippines</li> </ul>
Number of Channel	10
Virtual Loop (Vehicle Detection)	Yes
Interface with Physical Loop Sensor	Yes
Hardware	
Processor	Intel Processor
Memory (RAM)	16GB
Display Graphic	Discrete GPU
Storage	SATA RAID 1
Power Supply Voltage	600W
	Operating: 10% to 85% (Max dew point temperature = 40°C) (noncondensing).
<b>Environment Operation:</b>	
Connectivity Interfaces	TCP/IP, HTTP, UDP, USB
Processing Channel (Max)	10

### FEATURES:

Deep Learning



Multiple Channel



For Toll Plaza

