



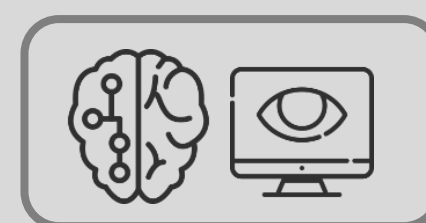
## RT-L100S

An industrial license plate recognition engine server with state-of-the-art deep learning technology, suitable for stop-and-go Toll Plaza

Software	
Image Resolution (Min)	720p (1280 x 720 pixels)
Camera View Range (Metre)	4 metre
License Plate Character size (Min)	100 pixels
Lighting Illumination Requirement (Min)	500 lux
Vision based Vehicle Detection	Yes
License Plate Recognition Results	Result record contains: <ul style="list-style-type: none"> <li>• Number plate string (optionally hashed)</li> <li>• Confidence level of recognition result</li> <li>• Vehicle speed</li> <li>• Time stamp</li> <li>• Country of origin (based on number plate syntax)</li> <li>• Vehicle class</li> </ul>
Compatible License Plate	Alphanumeric (ASCII) Format <ul style="list-style-type: none"> <li>• Malaysia</li> <li>• Philippines</li> </ul>
Number of Channel	2
Virtual Loop (Vehicle Detection)	Yes
Interface with Physical Loop Sensor	Yes
Hardware	
Processor	Intel Processor
Memory (RAM)	8GB
Display Graphic	Discrete GPU
Storage	SATA
Power Supply Voltage	600W
Environment Operation:	Operating: 10% to 85% (Max dew point temperature = 40°C) (noncondensing).
Connectivity Interfaces	TCP/IP, HTTP, UDP, USB
Processing Channel (Max)	2

### FEATURES:

Deep Learning



Multiple Channel



For Toll Plaza

