



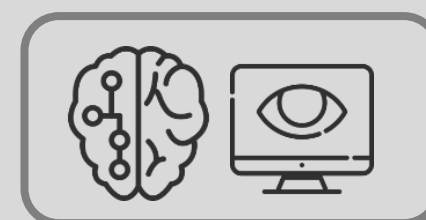
# RT-L100E

LPR engine in edge-side industrial PC for edge-side application.

Software	
Image Resolution (Min)	720p (1280 x 720 pixels)
Camera View Range (Metre)	4 metre
License Plate Character size (Min)	50 pixels
Lighting Illumination Requirement (Min)	500 lux
Vision based Vehicle Detection	Yes
License Plate Recognition Results	Result record contains: <ul style="list-style-type: none"> <li>• Number plate string (optionally hashed)</li> <li>• Confidence level of recognition result</li> <li>• Vehicle speed</li> <li>• Time stamp</li> <li>• Country of origin (based on number plate syntax)</li> <li>• Vehicle class</li> </ul>
Compatible License Plate	Alphanumeric (ASCII) Format <ul style="list-style-type: none"> <li>• Malaysia</li> <li>• Philippines</li> </ul>
Number of Channel	2
Virtual Loop (Vehicle Detection)	Yes
Interface with Physical Loop Sensor	Yes
Hardware	
Processor	Intel Processor
Memory (RAM)	DDR3L 1333 MHz 8 GB
Display Graphic	Discrete GPU
Storage	mSATA 1 x half size mini PCIe slot
Power Supply Voltage	single 12V input, ±10%
Environment Operation:	0 ~ 60° C with air flow 0.7m/s (32 ~ 140° F) (Operational humidity: 40° C @ 95% RH Non-Condensing) Non-Operation -40° C ~ 85° C and 60° C @ 95% RH non-condensing
Connectivity Interfaces	TCP/IP, HTTP, UDP, USB
Processing Channel (Max)	2

## FEATURES:

Deep Learning



Multiple Channel



For Toll Plaza

