



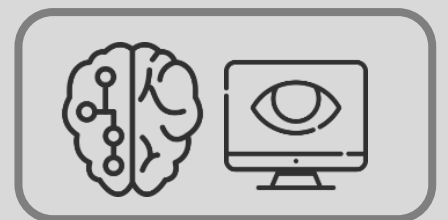
## RS-F100S

High performance FR engine workstation suitable for general application.

| Software                            |  |
|-------------------------------------|--|
| Image Resolution (Min)              | 720p (1280 x 720 pixels)   |
| Camera View Range (Metre)           | 2 metre  |
| Face Pixel size (Min)               | 100 pixels   |
| Lighting Illumination (Measurement) | 800 lux  |
| Vision based Face Detection         | Yes  |
| Face Recognition Results            | Result record contains: <ul style="list-style-type: none"> <li>• Face Detected coordinate</li> <li>• Face Recognition result based on (Top 5 closet to DB stored faces)</li> <li>• Time stamp</li> </ul> |
| Number of Channel (Max)             | 2  |
| Hardware                            |  |
| Processor                           | Intel Processor  |
| Memory (RAM)                        | 8GB  |
| Display Graphic                     | Discrete GPU   |
| Storage                             | SATA   |
| Power Supply Voltage                | 600W   |
| Environment Operation:              | Operating: 10% to 85% (Max dew point temperature = 40°C) (noncondensing).  |
| Connectivity Interfaces             | TCP/IP, HTTP, UDP, USB   |
| Processing Channel (Max)            | 2  |

### FEATURES:

Deep Learning



Post-event Forensic Search



Real-Time Performance

