



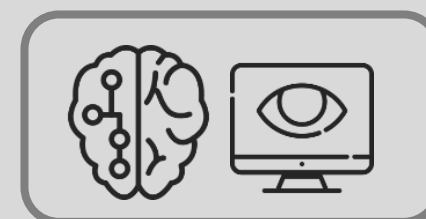
RS-F100E

FR engine in edge-side industrial PC for edge-side application.

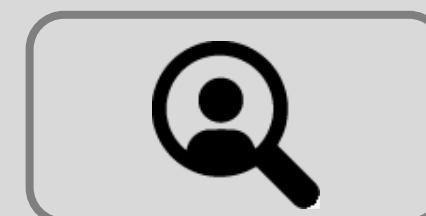
Software	
Image Resolution (Min)	720p (1280 x 720 pixels)
Camera View Range (Metre)	2 metre
Face Pixel size (Min)	100 pixels
Lighting Illumination (Measurement)	800 lux
Vision based Face Detection	Yes
Face Recognition Results	Result record contains: <ul style="list-style-type: none"> • Face Detected coordinate • Face Recognition result based on (Top 5 closet to DB stored faces) • Time stamp
Number of Channel (Max)	2
Hardware	
Processor	Intel Processor
Memory (RAM)	DDR3L 1333 MHz 8 GB
Display Graphic	Discrete GPU
Storage	mSATA 1 x half size mini PCIe slot
Power Supply Voltage	single 12V input, ±10%
Environment Operation:	0 ~ 60° C with air flow 0.7m/s (32 ~ 140° F) (Operational humidity: 40° C @ 95% RH Non-Condensing) Non-Operation -40° C ~ 85° C and 60° C @ 95% RH non-condensing
Connectivity Interfaces	TCP/IP, HTTP, UDP, USB
Processing Channel (Max)	2

FEATURES:

Deep Learning



Post-event Forensic Search



Real-Time Performance

